



# KINGSMEDE

25 BLIGH STREET, SYDNEY

---

SUITE 13.02

---

AVAILABLE SEPTEMBER 2026

---

NLA - 194.8M<sup>2</sup>

---

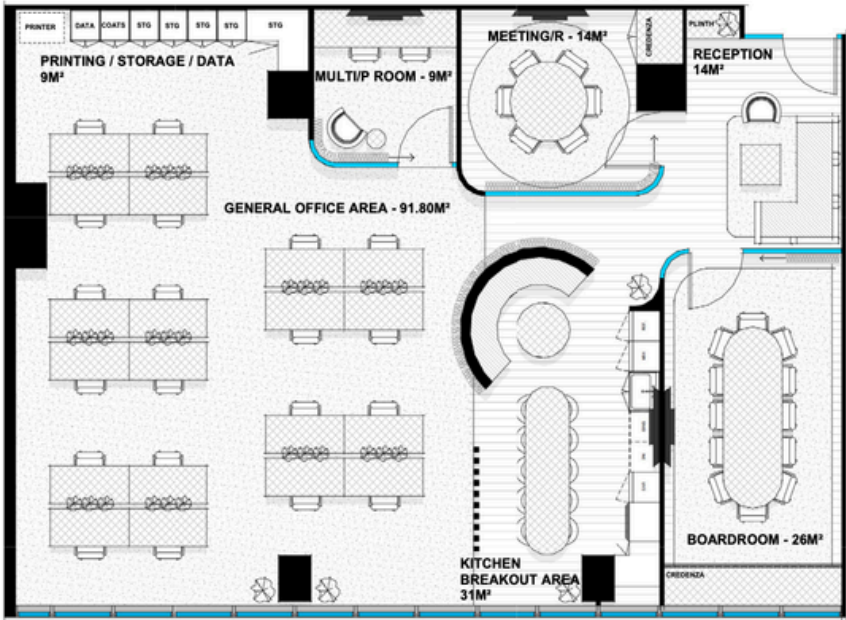
20 WORKSTATIONS

---

[KINGSMEDE.COM.AU](http://KINGSMEDE.COM.AU)

# 25 Bligh St Exclusives

Suite	1302
NLA	194.8m <sup>2</sup>
Workstations	20
Density	9.74m <sup>2</sup>



- Prime Sydney CBD financial core location
- Proximity to major transport links
- Luxury end-of-trip facilities
- Exclusive gym & squash court
- Secure touchless access
- On-site management
- On-site parking
- State-of-the-art fibre optic internet
- Bookable meeting, podcast and boardrooms
- Event space hire



**Anita Wallbank**

LEASING MANAGER

0403 589 979

AWALLBANK@KINGSMED.COM.AU



CURIOS? VIEW OUR AVAILABILITIES



CONTACT FOR MORE INFO