



# KINGSMEDE

**25 BLIGH STREET, SYDNEY**

---

**SUITE 9.04**

---

**AVAILABLE NOVEMBER 2026**

---

**NLA - 128M<sup>2</sup>**

---

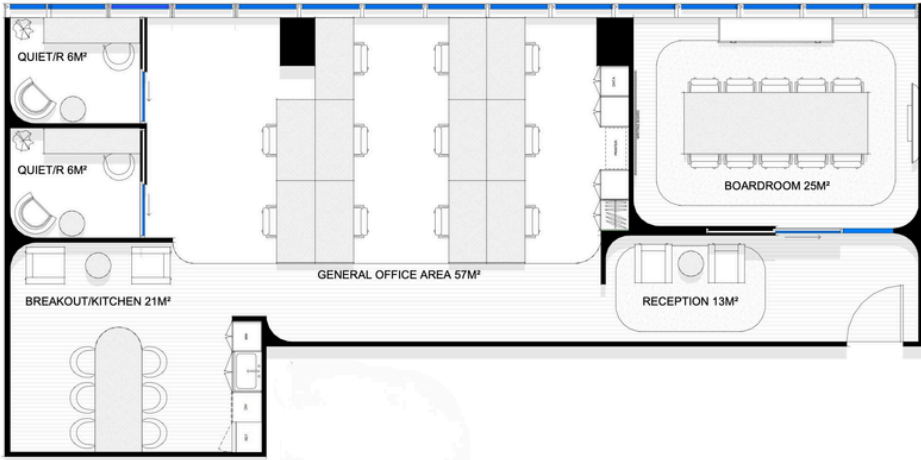
**11 WORKSTATIONS**

---

**[KINGSMEDE.COM.AU](https://www.kingsmede.com.au)**

# 25 Bligh St Exclusives

<b>Suite</b>	904
<b>NLA</b>	128m <sup>2</sup>
<b>Workstations</b>	11
<b>Density</b>	10.63m <sup>2</sup>



- Prime Sydney CBD financial core location
- Proximity to major transport links
- Luxury end-of-trip facilities
- Exclusive gym & squash court
- Secure touchless access
- On-site management
- On-site parking
- State-of-the-art fibre optic internet
- Bookable meeting, podcast and boardrooms
- Event space hire



**Anita Wallbank**

LEASING MANAGER

0403 589 979

AWALLBANK@KINGSMED.COM.AU



CURIOS? VIEW OUR AVAILABILITIES



CONTACT FOR MORE INFO