



# KINGSMEDE

**25 BLIGH STREET, SYDNEY**

---

**SUITE 9.03**

---

**AVAILABLE FEBRUARY 2027**

---

**NLA - 171M<sup>2</sup>**

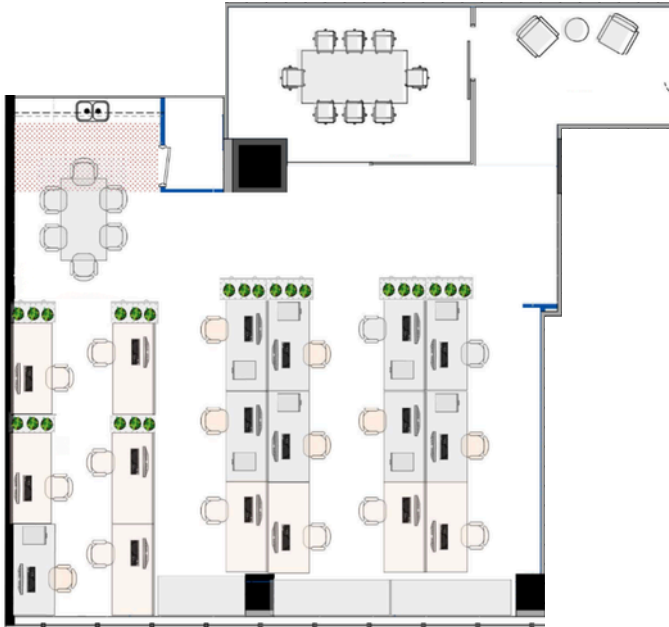
---

**18 WORKSTATIONS**

---

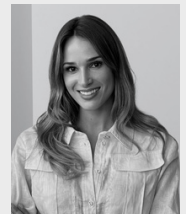
**[KINGSMEDE.COM.AU](http://KINGSMEDE.COM.AU)**

Suite	903
NLA	171m <sup>2</sup>
Workstations	18
Density	9.5m <sup>2</sup>



## 25 Bligh St Exclusives

- Prime Sydney CBD financial core location
- Proximity to major transport links
- Luxury end-of-trip facilities
- Exclusive gym & squash court
- Secure touchless access
- On-site management
- On-site parking
- State-of-the-art fibre optic internet
- Bookable meeting, podcast and boardrooms
- Event space hire



**Anita Wallbank**

LEASING MANAGER

0403 589 979

AWALLBANK@KINGSMED.COM.AU



CURIOS? VIEW OUR AVAILABILITIES



CONTACT FOR MORE INFO